

NEWINGTON GREEN

NEWSLETTER

8/11/2024

ADMIN@NEWINGTONGREEN.CO.UK

HEADTEACHER'S MESSAGE

Dear Parents and Carers,

Welcome back to the new school term. I hope you and your families had a restful and enjoyable break.

Next week is Anti Bullying Week. The theme this year is Choose Respect. During the week we will be delivering assemblies to all year groups in order to raise awareness of bullying and the hurt it can cause.

On Tuesday 12th November, we invite all pupils and staff to wear odd socks. The purpose of this activity is to raise awareness of our diversity as a community, as well as to encourage the celebration of our differences as we are one community but with many voices.

Friday 15th November, is Children in Need and pupils are invited to wear their pyjamas to school and donate £1 or £2 to support this worthwhile charity. The PTA will be running a hot chocolate and bake sale after school on Friday with 50% of the proceeds going towards Children in Need too.

On Thursday 21st November @ 9am, Tiago will be running a parent workshop on our new Healthy Packed Lunch Policy. It would be great to see as many parents as possible there.

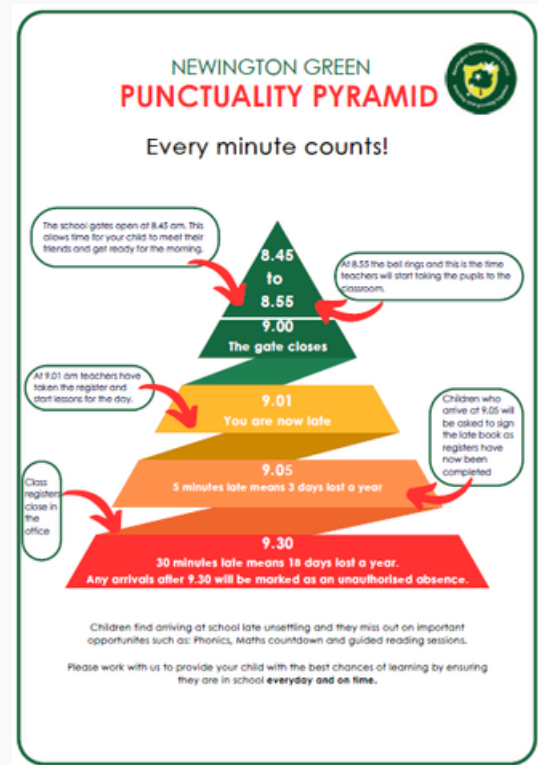
Have a great weekend!

Mairead

PUNCTUALITY

Punctuality in the morning is essential for school children as it sets a positive tone for the day and maximises learning opportunities. At Newington Green, the school gates open at 8:45 am, allowing children time to settle in, connect with friends, and prepare for the day ahead. Lessons start promptly at 9:00 am, and being even a few minutes late means missing important morning activities like phonics, maths countdowns, and guided reading, which are foundational to their learning.

Please remember that late arrivals are recorded on each child's attendance record, and with recent government updates to attendance regulations, persistent lateness may lead to a fine of **£80 to £160** per parent. To avoid this and support your child's best learning experience, please ensure they arrive on time each day. Every minute really does count!



NEWINGTON GREEN

ODD SOCKS DAY

To celebrate National Anti-Bullying Week (11-15th November), we invite our pupils to participate in "Odd Socks Day" on **Friday, 15th November**. This fun initiative encourages students to wear their brightest, most colorful socks to celebrate diversity and the importance of respecting our differences. There is no cost to participate, ensuring everyone can join in.



BOOK FAIR NEWS

Thank you so much for supporting our book fair last half term! By buying the books, you not only helped to foster a love of reading but you also helped to provide more great resources for our class book corners. Thanks to you, we have built up £198.65 in credit, to spend at Scholastic Books. We really appreciate your involvement and your continued support with developing reading for pleasure in school.



Together we have raised... **£198.65** for our school to spend on **FREE BOOKS**



YEAR 5 SOLAR SYSTEM LESSON

In Year 5's recent solar system lesson, pupils had an exciting hands-on experience with inflatable planets, the Sun, and the Moon. They worked together to recreate the solar system, positioning each "planet" in its orbit to visualize their sizes and distances from the Sun. This interactive approach made learning about space fun and memorable, helping students to better understand the order and characteristics of each planet. The lesson was full of energy and laughter as they explored our solar system in such a dynamic way, making it an unforgettable experience for all!



NEWINGTON GREEN

SCHOOL TRIPS 2024-25

GROWING TOGETHER SLEEPING WORKSHOP

TÜRKÇE DERSLERİ HER SALI

12 KASIM'DA BAŞLIYOR

SAAT: 3.30PM- 4.30PM

NASIL KAYDETTIREBİLİM: ARBOR

FIYAT- £1 SINIF BAŞINA

6-11 YAŞ ARASI

Calmer Nights Sleep Workshop

WEDNESDAY 4TH DECEMBER 2024

10:00-12:00

For many families with young children a good night's sleep can be a rare treat!

Come and join us
Meet other parents explore ways to improve both your and your child's sleep and to **feel more confident** about your family's routine.

Free NHS Workshop

LOCATION
New River Green Children's Centre

For parents with children aged 1-5 years and parents who live or have a GP in Islington

Details:
Address:
New River Green Children's Centre
23 Ramsey Walk, London, N1 2SX

For further information call Sara Lakin: 020 3316 1824

To book a place, please register online:

To book a place register online at:
<https://www.eventbrite.co.uk/e/calmer-nights-workshop-tickets-10028169514977aff+oddtcreator>

PARENT ANXIETY WORKSHOP

BREAKFAST CLUB

SWS School Wellbeing Service

BUILDING CONFIDENCE AND MANAGING ANXIETY IN YOUR CHILD

Workshops for parents at Newington Green Primary School

The Building Confidence and Managing Anxiety in Your Child Workshop for parents/carers is a workshop being delivered by the Islington School Wellbeing Service (SWS). The SWS works with schools across the borough to address the challenges children and young people commonly experience that can impact on their emotional wellbeing.

They will be delivering two of these workshops in-person, with one workshop adapted specifically for parents of children with autism.

Please choose which workshop you think would be most suited to the needs of your child.

If you would like to attend, please X, or if you have any specific questions about the workshop content, please contact Helen Bennett.



Building Confidence and Managing Anxiety in Your Child

WHEN? Friday 8th November 09:00-10:30

WHO? Open to parents/carers whose child is struggling with anxiety

The main areas of focus will be on understanding:

- What anxiety is, and what it looks like in children
- What the main factors are that can lead to the development of anxiety, as well as the factors that can maintain it
- What strategies parents can use to manage their child's anxiety and build their confidence

Building Confidence and Managing Anxiety in Your Child with Autism

WHEN? Friday 22nd November 09:00-10:30

WHO? Open to parents/carers whose child is struggling with anxiety and is autistic, or is waiting for an autism assessment

The main areas of focus will be on understanding:

- What anxiety is, and how children with autism experience anxiety
- What the main factors are that can lead to the development of anxiety, as well as the factors that can maintain it
- What strategies parents can use to manage anxiety and build confidence in children with autism

Newington Green Primary School Breakfast Club Plan for week beginning 11.11.2024

Staff who we know will be working at Breakfast Club: **Lead: Lisa B** Playworkers: **Shpetime, Sannah and Asmie**

Monday	Tuesday	Wednesday	Thursday	Friday
Reading corner Homework support, please bring in the work you would like support with!	Reading corner Homework support, please bring in the work you would like support with!	Reading corner Homework support, please bring in the work you would like support with!	Reading corner Homework support, please bring in the work you would like support with!	Reading corner Homework support, please bring in the work you would like support with!
Arts and Craft Fox Face Leaf Making 	Maths Activities Colour by Number Bonds Within 10/20 	Literacy activities Bonfire Night Crossword 	EYFS Focus Space Size Ordering 	Free Choice Firework Safety Colouring Cards
Legol Board games Giant jigsaw Puzzles Knitting & Cross stitch Arts & Craft	Legol Board games Giant jigsaw Puzzles Knitting & Cross stitch Arts & Crafts	Legol Board games Giant jigsaw Puzzles Knitting & Cross stitch Arts & Crafts	Legol Board games Giant jigsaw Puzzles Knitting & Cross stitch Arts & Crafts	Legol Board games Giant jigsaw Puzzles Knitting & Cross stitch Arts & Crafts
<p>Adaptations Small groups of children will participate in activities with adult supervision to gain access and support where needed</p> <p>Menu Weetabix, Rice Krispies, and Cornflakes. Hot food will be one of the following: Pancakes with syrup, bagel with scrambled eggs, beans on toast and toast/ crumpets with jam & English muffins</p>				

ISLINGTON HEALTHY SCHOOL ADVISOR

Please click here to see community food services available within Islington

[Community Food Services - Islington Food Partnership](#)



NEWINGTON GREEN

IMPORTANT DATES

- Year 1, Oak - Freightliners City Farm **Friday 8th of November**
- School Bikeability Years 3 & 4 **Monday 11th to Friday the 15th of November**
- Y6 Ash - Ben Kinsella Trust **Tuesday 12th of November**
- Y1 Oak @ Forest School – **Tuesday 12th of November**
- Y6 Cedar - Ben Kinsella Trust **Thursday 14th of November**
- Y5 @ The Science Museum - **Friday 15th November**
- Y1 Holly @ Freightliners City Farm - **Friday 15th November**
- **End of term Friday 20th of December Children finish at 1:30pm** - No ASC

STARS OF THE WEEK

Year 1 Zainab

Year 2 Zion and Meryem

Year 3 Izabella and

Year 4 Renato and Dion

Year 5 Silva and Genlan

Year 6 Scout and Ayla



DOODLE MATHS CHAMPION

This weeks class with the highest doodle maths points are **Mulberry**.

Congratulations, Musa is proud. Please remember to doodle everyday.



ATTENDANCE STATS

Whole school attendance this year: **94.3%**

National average this year: **95.2%**

Registration Form	Present R/C: Marks	Late R/C: Students
Palm	98.3%	8
Ash	97.2%	2
Silver birch	97%	5
Mulberry	96.8%	10
Cedar	96.6%	5
Rowan	96.2%	5
Willow	95.7%	6
Maple	95%	5
Pine	94.8%	5
Oak	94.7%	7
Apple	93.3%	3
Elm	92.2%	6
Sycamore	92.1%	7
Cherry	91.7%	
Beech	90.8%	8
Holly	90%	6

DON'T FORGET. BE IN, TO WIN

