

NEWINGTON GREEN

NEWSLETTER

05/09/25

ADMIN@NEWINGTONGREEN.CO.UK

HEADTEACHER'S MESSAGE

Dear Parents and Carers,

Welcome back to the new school year, and a special welcome to all our new families. I would also like to extend a warm welcome to new staff members who have joined the team.

It was wonderful to see all the children return to school on Tuesday, filled with positivity and enthusiasm for the year ahead. This continued throughout this week, despite the rainy break times.

All classes have been talking about routines, expectations and learning behaviours this week and, in our celebration assembly today, lots of children were nominated for 'Star of the Week' for being great role models of this behaviour.

Just to remind you that Newington Green is now a Bronze Rights Respecting School. This week, we have introduced the children to the rights. We are focusing on a right each month, which will be displayed on our classroom doors and around the school. Article 28, every child has a right to an education, is our focus for September.

Next week, we are holding our Meet the Teacher sessions. You will already have received an email the school office with days and times for your year group. This is a great opportunity to meet your child's teacher and learn about topics the children will be studying this term. If you are unable to attend, you will still receive the class newsletter with this information and some helpful home learning ideas.

I want to finish by saying a big thank you to the wonderful staff team for a fantastic week one.

Have a great weekend!

SCHOOL SUPPORT COFFEE MORNING



The poster features a central illustration of a white coffee cup with a green lid and a circular logo on the side, set against a background of green wavy lines. Below the illustration, the text reads: 'SCHOOL SUPPORT SERVICES' in large green letters, followed by 'COFFEE MORNING' in smaller green letters, and 'MONDAY 15.09.2025 • 9.05AM' in bold green letters. At the bottom, there is a small paragraph of text: 'Come and meet our Educational Psychotherapist, Bright Futures link worker, and other support staff. Find out what help is available for you and your child - from emotional wellbeing and behaviour to family and community support. Have a chat, ask questions, and connect with our team. We are here to help.' and the email address 'ADMIN@NEWINGTONGREEN.CO.UK' at the very bottom.

At Newington Green, we offer a wide range of support for children and families. This includes emotional literacy sessions with our ELSAs, help from our Learning Mentor, access to our School CAMHS Link Person, Bright Futures Link Worker, and our Educational Psychotherapist.

If you have any concerns about your child's emotional wellbeing, learning needs, or SEN support, please speak to your child's class teacher or Helen, our Deputy Head and SENDCo. You can also leave a message with Katie in the school office.

Come along to our School Support Services Coffee Morning on **Monday 15th September at 9:05 AM** to meet the team and find out more about what is available. Everyone is welcome!

NEWINGTON GREEN

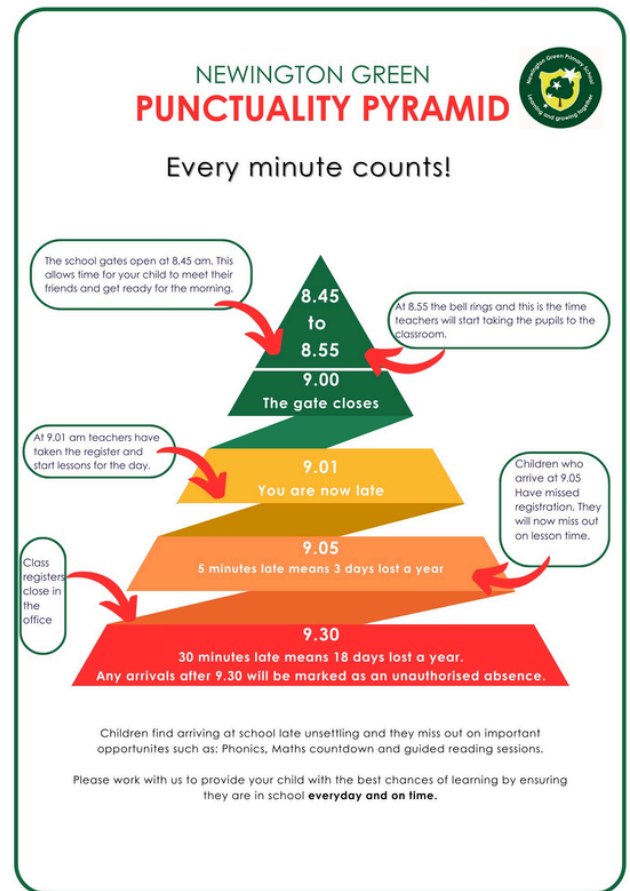
ATTENDANCE REMINDERS

We know how important each school day is for your child's learning, wellbeing, and friendships. When children attend regularly and arrive on time, they have the best chance to succeed and feel confident in their learning. Even being just a few minutes late each day can add up to hours of lost learning across the year.

Our school gates open at 8:45 AM, giving children time to settle in and connect with friends. By 8:55 AM, teachers begin taking pupils to class, and lessons start promptly at 9:01 AM. Children arriving after 9:05 AM are marked late. After 9:30 AM, this is recorded as an unauthorised absence unless a valid reason is given.

Please also remember that term-time holidays are not authorised unless there are exceptional circumstances. Every day missed affects your child's progress and confidence in class. If you are planning to travel or have concerns about attendance, please speak to us as early as possible.

We understand that some families face challenges getting to school every day. If you are experiencing any difficulties, no matter how small, please contact Sandra, our Attendance Champion. She is here to help and support you. Together, we can make sure your child has every opportunity to thrive.



SCHOOL UNIFORM REMINDER

Our uniform was designed by the children and is a big part of our school identity – we expect everyone to wear it with pride! It helps us feel part of a team, keeps mornings simple, and makes it easy to spot our pupils on trips.

Please note: Crocs are not allowed.

Uniform checks happen regularly, so make sure your child is in:

- ✓ Green school sweatshirt & polo shirt
- ✓ Black trousers or skirt (no joggers or jeans)
- ✓ Plain black shoes or trainers
- ✓ Green or black socks/tights

PE Kit: Black shorts/joggers, PE T-shirt, black trainers/plimsolls.

You can order uniform online [here](#). Second-hand uniform is also available – just ask at the office!



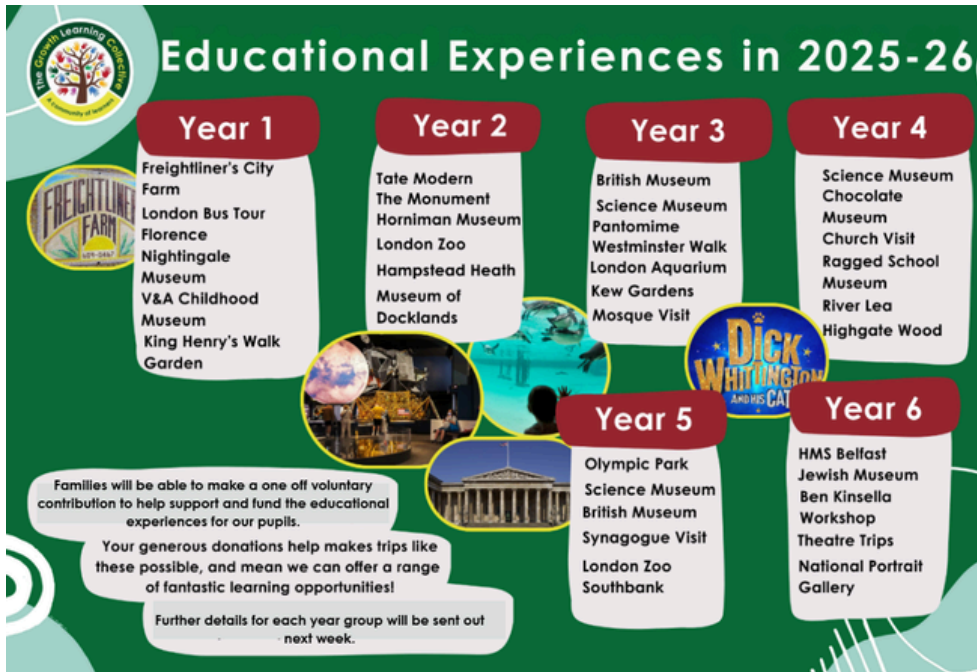
NEWINGTON GREEN

LATE COLLECTION POLICY

The school applies a late collection charge for children who are not collected from school on time. The Late Collection Policy and charges can be accessed using the following link.

[Newington Green Primary School - School Policies](#)

SCHOOL TRIPS



Educational Experiences in 2025-26

Year 1

- Freightliner's City Farm
- London Bus Tour
- Florence Nightingale Museum
- V&A Childhood Museum
- King Henry's Walk Garden

Year 2

- Tate Modern
- The Monument
- Horniman Museum
- London Zoo
- Hampstead Heath
- Museum of Docklands

Year 3

- British Museum
- Science Museum
- Pantomime
- Westminster Walk
- London Aquarium
- Kew Gardens
- Mosque Visit

Year 4

- Science Museum
- Chocolate Museum
- Church Visit
- Ragged School Museum
- River Lea
- Highgate Wood

Year 5

- Olympic Park
- Science Museum
- British Museum
- Synagogue Visit
- London Zoo
- Southbank

Year 6

- HMS Belfast
- Jewish Museum
- Ben Kinsella Workshop
- Theatre Trips
- National Portrait Gallery

Families will be able to make a one off voluntary contribution to help support and fund the educational experiences for our pupils.

Your generous donations help makes trips like these possible, and mean we can offer a range of fantastic learning opportunities!

Further details for each year group will be sent out next week.

We are proud to offer a rich programme of educational experiences for all year groups in 2025–26, including visits to museums, theatres, and cultural sites. To help us continue providing these valuable opportunities, we kindly ask families to make a one-off voluntary contribution. Your support helps cover transport and entry costs, making these learning experiences accessible to every child. Further details for each year group will be shared next week.

FREE PERFORMING ARTS TASTER DAY!



ANNA FIORENTINI THEATRE & FILM SCHOOL

ACTING, SINGING, DANCE & FILM CLASSES
4 - 6 YEARS | 7 - 18 YEARS
CAMDEN | DOCKLANDS | GREENWICH | HACKNEY | STRATFORD | LOUGHTON

Hackney Branch Classes

Taster Day 20th September

Multi-Award Winning Stage School Celebrating 25 Years!

JOIN OUR BRAND NEW SCHOOL! ALL NEW STUDENTS TOGETHER, LEAD BY OUR EXPERIENCED TEAM. LIMITED PLACES. BOOK NOW.

Learn from leading industry professionals. Opportunities to perform in showcases
Boost confidence | Increase self-esteem | Develop transferable life skills
Potentially land roles on TV, in Film and the West End via our Talent Agency

020 7682 3403 | loughton@afperformingarts.com | afperformingarts.com

JOIN US...

To learn skills for personal/professional development

Our school nurtures children and young people, helping them reach their full potential in a fun and creative environment. Whether your child dreams of entering the performing arts industry or simply wants to boost their confidence, self-esteem, and transferable life skills, our program is the perfect fit. Led by leading professionals, dedicated to developing and empowering the next generation, we provide top-notch instruction and support. Join us and watch your child thrive!

For short holiday courses

In addition to our weekend schools, we offer week-long holiday courses. These provide a fantastic opportunity for children to learn new skills, stay social and perform for friends and family at the end of the week. Past themes have included: Rock School, From West End to Broadway, Lin-Manuel Miranda Musicals, and Movie Musicals.

Get a chance to be signed to an agency

Our Fiorentini Mossen Talent Agency exclusively represents clients who are current students or alumni of our Theatre & Film School. We are passionate about nurturing talent and providing industry opportunities for all. Our clients have secured leading roles in TV, ('Eastenders', 'Small Axe', 'Chugginton') feature films, ('Song for Marion', 'Swallows & Amazons') and on the West End stage, ('Lion King', 'Matilda', 'Beauty and the Beast'), as well as in radio and various music videos.

Through our bursary scheme

The Fiorentini Foundation is the charitable arm of the school. Its mission is to enable all children to access the Performing Arts regardless of financial background. The bursary scheme offers subsidised places to students who wish to attend the school but may struggle with fees.

Visit www.afperformingarts.com for more information and to sign up

We are excited to share a fantastic opportunity for Newington Green students, thanks to funding from the Fiorentini Foundation. Students are invited to a free Drama, Singing, and Dance Taster Day on Saturday, 20th September at Hackney Sixth Form College. Those who join could even perform at the Hackney Empire in 2026! Free places are available for the afternoon session (2:30–5:30 PM), but spaces are limited — book quickly! Visit www.afperformingarts.com for more.

NEWINGTON GREEN

IMPORTANT DATES

- **Year 5 & Year 6 parent meeting** Tuesday 9th of September @ 3.15pm
- **Year 1 & Year 2 parent meeting** Wednesday 10th of September @ 3.15pm
- **Nursery & Reception parent meeting** Thursday 11th of September @ 3.15pm
- **Year 3 & Year 4 parent meeting** Friday 12th of September @ 3.15pm
- **School Support Coffee Morning** Monday 15th September @ 9.05am (Parent Hub)
- **Flu Vaccine, 1st visit - Reception to Yr 6** Tuesday 23rd September
- **Year 3 Science Museum trip** Friday 26th of September
- **Year 4 Science Museum trip** Thursday 1st of October
- **Last day of term** Friday 24th October.
- **Pupils return to school** Tuesday 4th of November

To access the school calendar click [here](#).

For a full list of term dates for the academic year please click [here](#).

STARS OF THE WEEK

Year 1 - Alexia

Year 2 - Tommy and Oliver

Year 3 - Manha and Alec

Year 4 - Osarieman and Ali

Year 5 - Mehmet and Alyssa

Year 6 - Isabella and Aliyah



After School Club Subsidy

This is just a reminder that all families who currently receive an After School Club subsidy will need to reapply for the income assessment in September. This does not apply to Pupil Premium children who access Enrichment clubs at a discounted rate. A new form will be sent to you in September, or you can collect a new copy from the office.

ENRICHMENT CLUBS COMMENCE ON THE 15TH OF SEPTEMBER. BOOKINGS ON ARBOR OPEN ON THE 8TH OF SEPTEMBER

FREE SCHOOL MEAL VOUCHERS DURING SCHOOL HOLIDAYS

Do you qualify for free school meals (FSM) status. Anyone who hasn't applied or whose circumstances may have changed please apply on Islington's Citizen portal to see if you are eligible.
[Free school meals](#) | [Islington Council](#)

SUPPORT WITH CHILDCARE

If you are a working parent and require help with Childcare please use the links to see what help is available.

[Eligibility checker](#) | [Best Start in Life](#)

[Tax-Free Childcare](#) - GOV.UK

[Free Childcare for Working Parents: Overview](#) - GOV.UK

ENRICHMENT CLUBS

Newington Green Primary - After School Clubs



Monday	Tuesday	Wednesday	Thursday	Friday
Breakfast Club 7:30 - 8:55	Breakfast Club 7:30 - 8:55	Breakfast Club 7:30 - 8:55	Breakfast Club 7:30 - 8:55	Breakfast Club 7:30 - 8:55
Multi-sports Y1&2 (S.Hall)	Gymnastics Y2-Y3 (S. Hall)	Football Y3-Y6 (S.Hall)	Dance Club REC-Y6 (P. Hall)	Gymnastics REC-Y1 (S. Hall)
Dodgeball/Benchball Y4-6 (P.Hall)	Turkish Club Y1-6 (Y6 Group Room)		Mindfulness Rec-Y6	
Singing	Cooking club Y1- Y3		Gymnastics Y4-Y6 (S. Hall)	
After School Club 3:30 - 4:30 4:30 - 6:30 3:30 - 6:30	After School Club 3:30 - 4:30 4:30 - 6:30 3:30 - 5:6:30	After School Club 3:30 - 4:30 4:30 - 6:30 3:30 - 6:30	After School Club 3:30 - 4:30 4:30 - 6:30 3:30 - 6:30	After School Club 3:30 - 4:30 4:30 - 6:30 3:30 - 6:30