

NEWINGTON GREEN

NEWSLETTER

12/09/25

ADMIN@NEWINGTONGREEN.CO.UK

HEADTEACHER'S MESSAGE

Dear Parents and Carers,

It was lovely to see so many of you attending our Meet the Teacher sessions this week. It is very important for the children to see that school and home work in partnership together and we really appreciate all you do to support your children at home. Thank you to those parents who took the time to give us some lovely feedback on the sessions.

From Monday, **our main entrance will move to Auriga Mews, just off Mildmay Road** as part of the Mildmay Liveable Neighbourhood scheme. The gates will open at 8.45am daily. This afternoon, we had a run through of our lining up order so that all the children know where to go at the beginning and end of the day. In the mornings when the gate opens, **Y5 and Y6 pupils will go straight up to class to their teachers, Nursery and Reception pupils will go around to the class doors as you currently and Years 1,2 3 and 4 will line up in the playground.** Children will not be allowed on the climbing frame in the morning or afternoon at dismissal. Please bear with us next week while we all get used to this change.

Breakfast and After School Club will still be accessed via the gate on Matthias Road. The gate will NOT be open during the day. Parents collecting children from and dropping children to morning and afternoon nursery will also need to use the new entrance on Auriga Mews.

For those of you who scoot or cycle to school, we ask that you get off your bike/scooter at the gate and walk them through the playground. Scooters can be parked under the wooden shed in the playground and bikes can be walked through to the cycle shed.

To coincide with the opening of the new entrance, Islington Council have implemented a school street on Auriga Mews, Mildmay Road and Wolseley Road at the beginning and end of the school, which means that cars will not be allowed on these streets during school drop off and collection times. This will make the school run much safer. For those of you who drive, please be aware that you will not be able to park on these streets during school drop off and collection time.

SOLAR PANELS ON THE ROOF

We are thrilled to share that the installation of solar panels on our school roof has officially begun — see the photos for a sneak peek! It is incredibly exciting to see this project come to life after two years of dedicated fundraising. A massive thank you to one of our families who donated funding to get this project off the ground.

Thanks to the amazing support of our community, including generous donations from parents and local businesses, Newington Green Primary is now part of the largest solar panel scheme of its kind in Islington. As highlighted in the [Islington Tribune article](#), this is a huge achievement and a brilliant step towards a greener, more sustainable future.

We feel very lucky — thank you to everyone who helped make this happen!





NEWINGTON GREEN

WE ARE A BRONZE RIGHTS RESPECTING SCHOOL!

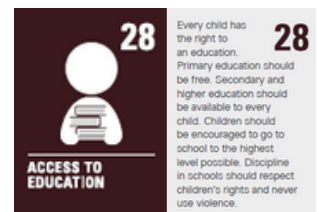
We are proud to announce that NG is now a Bronze Rights Respecting School, as recognised by UNICEF UK. This award marks the beginning of our journey to embed the United Nations Convention on the Rights of the Child (CRC) into every part of school life.

A Rights Respecting School puts children's rights at the heart of its planning, policies, and culture. It helps create a safe, respectful, and inclusive environment where children can thrive—not just academically, but emotionally and socially too.

Last week, we began introducing children to the articles of the CRC. Each month, we will focus on one key right, displayed on classroom doors and around the school, helping to build a strong understanding of what it means to respect and be respected.

This month's focus is **Article 28: "Every child has the right to an education."**

We are exploring with children what this right means in practice and why education is essential for every child, everywhere.

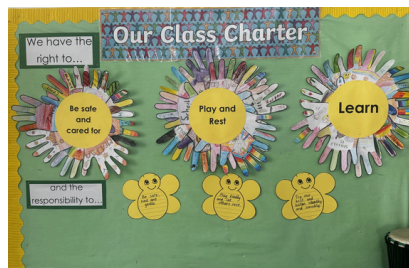
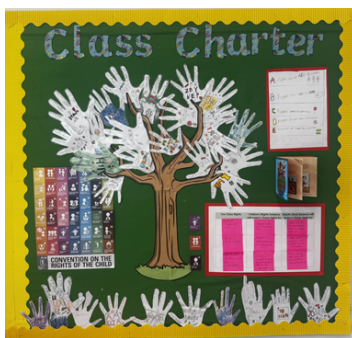


Class Charters have been created across the school, reflecting how children and adults can work together to ensure everyone's rights are respected. These charters are proudly displayed, see below for photos.

What This Means for Our School

- Children learn about their rights and the responsibilities that come with them
- Staff promote respect, dignity, and a sense of belonging for every child
- Families are included in our commitment to creating a respectful and rights-aware community

This is an exciting step forward, and we look forward to continuing our journey towards Silver and beyond. Thank you for being part of a school where every child's voice, rights, and wellbeing matter.



ATTENDANCE

This year, Islington has classed Newington Green as Red in its traffic light system for school attendance. This means our overall attendance rates are among the lowest in the borough.

This is a serious concern. As mentioned above in Article 28 every child has the right to an education. Regular school attendance is not just a legal responsibility; it is essential for your child's learning, wellbeing, and future success.

To kick off our campaign for better attendance, each class now has a weekly attendance display on their door so children can see how well their class is doing. Congratulations to Maple and Sycamore for being the first classes to earn a Popcorn Party for their excellent attendance.



We know that with strong partnerships between school and home, we can turn this around. Let us all commit to making attendance a priority together in 2025 to 2026.

NEWINGTON GREEN

CHEFS IN SCHOOLS CONFERENCE 2025 – LEADING THE WAY FROM NG

Last week, we were proud to see our very own Tiago, Head Chef at Newington Green, representing our school at the Chefs in Schools Conference 2025, held at the historic Fishmongers' Hall in London.

The theme this year was sustainability—from reducing food waste to inspiring children and families to eat well for their health and the planet. Tiago joined a national panel of chefs to share what we are doing at Newington Green and across the Growth Learning Collective.

He spoke passionately about:

- Reducing food waste through training and teamwork
- Building confidence and recognition for kitchen staff
- Knowing every child by name, creating trust around food
- Offering gardening clubs to teach children about food origins
- Running Taste Education and cooking classes to build life skills and curiosity

Tiago's message was clear: a school kitchen can be a true centre of learning—and we are proud to be leading by example.

Tiago also spoke directly with Stephen Morgan, Minister for School Food, sharing some of our proudest achievements:

- The success of Family Kitchen, bringing parents and children together
- A significant drop in packed lunches, as families grow to trust our meals
- More seasonal, nutritious menus that children love

The Minister praised our inclusive, community-focused approach—calling it a model for national change.

What This Means for Newington Green

- Children gain confidence, curiosity, and healthy habits
- Families feel part of our food culture and benefit from reduced costs
- Staff are celebrated for their vital roles
- Our school community shows how food can drive wellbeing and connection

We are incredibly proud of Tiago and the whole team. This conference reminded us that schools like ours are shaping not just healthy eaters—but healthier communities.



NEWINGTON GREEN

IMPORTANT DATES

- **School Support Coffee Morning** Monday 15th September @ 9.05am (Parent Hub)
- **Flu Vaccine, 1st visit - Reception to Yr 6** Tuesday 23rd September
- **Year 3 Science Museum trip** Friday 26th of September
- **Year 4 Science Museum** trip Thursday 1st of October
- **Last day of term** Friday 24th October.
- **Pupils return to school** Tuesday 4th of November

To access the school calendar click [here](#).

For a full list of term dates for the academic year please click [here](#).

STARS OF THE WEEK

Year 1 - Ayden

Year 2 - Dylan and Ayla S

Year 3 - Delilah and Zion

Year 4 - Sadie and Zahra

Year 5 - Kiarah and Ali Hussain

Year 6 - Atalay and Khalila



BREAKFAST CLUB

Newington Green Primary School Breakfast Club Plan for week beginning 15.09.2025 Staff who we know will be working at Breakfast Club: Lead: Lisa B Playworkers: Aimee & Tyrus				
Monday	Tuesday	Wednesday	Thursday	Friday
Reading corner Homework support, please bring in the work you would like support with!	Reading corner Homework support, please bring in the work you would like support with!	Reading corner Homework support, please bring in the work you would like support with!	Reading corner Homework support, please bring in the work you would like support with!	Reading corner Homework support, please bring in the work you would like support with!
Arts and Craft Friendship Bracelets	Maths Activities Number Matching Activity	Literacy activities Differentiated Writing Poem Frames	EYFS Focus Colouring Shapes	Free Choice art/oly area, colouring, sticking, crafting, etc.
Legal Board games Giant jigsaw Puzzles Knitting & Cross stitch Arts & Crafts	Legal Board games Giant jigsaw Puzzles Knitting & Cross stitch Arts & Crafts	Legal Board games Giant jigsaw Puzzles Knitting & Cross stitch Arts & Crafts	Legal Board games Giant jigsaw Puzzles Knitting & Cross stitch Arts & Crafts	Legal Board games Giant jigsaw Puzzles Knitting & Cross stitch Arts & Crafts
<p>Additionalities Small groups of children will participate in activities with adult supervision to gain access and support where needed</p> <p>Menu Weetabix, Rice Krispies, and Cornflakes. Hot food will be one of the following: Pancakes with syrup, bagel with scrambled eggs, beans on toast and toast / crumpets with jam & English muffins</p>				

AFTERSCHOOL CLUB



FREE SCHOOL MEAL VOUCHERS DURING SCHOOL HOLIDAYS

Do you qualify for free school meals (FSM) status. Anyone who hasn't applied or whose circumstances may have changed please apply on Islington's Citizen portal to see if you are eligible.

[Free school meals | Islington Council](#)

SUPPORT WITH CHILDCARE

If you are a working parent and require help with Childcare please use the links to see what help is available.

[Eligibility checker | Best Start in Life](#)

[Tax-Free Childcare - GOV.UK](#)

[Free Childcare for Working Parents: Overview - GOV.UK](#)

ATTENDANCE STATS

Whole school attendance this year: **93.1%**

Statutory school attendance: **94.4%**

National average this year: **95.4%**

Sycamore	98.00%	4
Maple	97.70%	6
Cedar	96.70%	7
Elm	96.60%	7
Rowan	96.10%	5
Mulberry	95.70%	
Holly	94.00%	7
Palm	94.00%	5
Willow	94.00%	9
Silver birch	93.70%	1
Oak	93.60%	6
Beech	92.90%	9
Apple	92.30%	5
Pine	91.70%	3
Ash	87.20%	5
Cherry	83.50%	

Well done Sycamore and Maple who will be receiving a Popcorn Party!