

NEWINGTON GREEN

NEWSLETTER

07/11/25

ADMIN@NEWINGTONGREEN.CO.UK

HEADTEACHER'S MESSAGE

Dear Parents and Carers,

It was wonderful to welcome the children back to school this week. I hope everyone had a relaxing half term holiday.

Next week, **10 - 14th November, is Anti Bullying Week**, with the theme: Power for Good. The week will kick off with **Odd Socks Day on Monday 10th**, with adults and children being encouraged to wear odd socks to celebrate what makes us all unique. Our Right of the Month for November, is Article 19, which links well with Anti Bullying Week. In our Rights Respecting Assembly on Monday, we will be discussing Article 19 and Anti Bullying Week.

On Friday 14th November, parents and carers are invited to our first Bring a Parent to School reading morning. Parents and carers are invited to read in class with their children from 9.05 to 9.30. Afterwards, the school Book Fair will be available in the performance hall if you wish to buy a reduced cost book. You can come along to the Book Fair Thursday after school too.

I wanted to thank our fantastic PTA for their efforts in organising a great fundraising event today to raise money for families affected by Hurricane Melissa in Jamaica. I know that many members of our school community have been impacted by the hurricane.

Please can I remind pupils not to bring toys or other personal items to school with them. They distract children from their learning and if lost or misplaced cause upset. These items will be taken from children and returned at the end of the day.

Have a lovely weekend.

NOVEMBER'S RIGHT OF THE MONTH: EVERY CHILD HAS THE RIGHT TO BE KEPT SAFE AND PROTECTED FROM HARM

This November, Newington Green is focusing on Article 19 from the United Nations Convention on the Rights of the Child.

This important article states that every child has the right to be kept safe and protected from harm.

At school, we are helping children understand what this means in everyday life:

- Every child should feel safe at school, at home, and everywhere they go.
- Adults have a responsibility to look after children and make sure they are not hurt.
- If something feels wrong, children should know they can tell someone and get help.

We are linking this right to two key events this month:

Anti-Bullying Week (starting 10th November)

Throughout the week, children will be learning about kindness, how to stand up to bullying, and how to support one another to feel safe and happy.

Children in Need

We will also be raising money to help children across the UK who need extra support to stay safe, healthy, and cared for. Together, these activities help us show that safety, care, and kindness are at the heart of everything we do at Newington Green.



ODD SOCKS DAY: ANTI-BULLYING WEEK



To kick off Anti-Bullying Week, we are celebrating Odd Socks Day on Monday 10th November!

Children (and staff!) are invited to wear odd socks to school to celebrate what makes us all unique and to remind everyone that it is good to be different.

Let's start the week by spreading kindness and celebrating individuality!

YEAR 3 GET CREATIVE IN ENGLISH!

Year 3 have been busy discussing and sharing ideas about their new English text. Inspired by the front cover, they created their own beautiful artwork using pastels and chalk. The children showed great imagination and creativity in bringing their ideas to life.

We cannot wait to start reading the text and discover who the talented illustrator is!

See the photos to enjoy some of their amazing artwork!



GARDENING CLUB IS BACK!

Our Gardening Club for Years 4 to 6 returned this Tuesday, 4th November, and we had a fantastic start to the new season! We began by learning how plants grow and what they need to stay healthy — including what they “eat”. The children then rolled up their sleeves to clean and prepare the garden, removing weeds and turning the soil to get it ready for new winter seeds.

Along the way, they discovered worms, snails, ladybirds, and other tiny garden friends — which made the session even more exciting! To finish, each child sowed their own garlic in pots, the first step towards a spring harvest.

Gardening Club runs every Tuesday from 3:30 to 4:30pm — we can't wait to see how our garden grows!



SAFE HAVEN SCHEME – KEEPING OUR CHILDREN SAFE

As the evenings grow darker, it is important that children and young people know where they can go if they ever feel unsafe while out in the community.

The Safe Haven Scheme provides safe spaces across Islington where children can go for immediate support and refuge. These locations are clearly marked with the Safe Haven poster, shown below, and are part of a borough-wide effort to keep our young people protected.

We encourage all families to take a moment to talk to their children about recognising Safe Haven locations and how to seek help if they ever feel worried or threatened.

See the Safe Haven poster below to learn more about where these safe spaces can be found.



ISLINGTON
For a more equal future

FLUORIDE VARNISH @NG

Whittington Health NHS

Fluoride Varnish at Newington Green Primary School

Dear Parents/Carers

The Whittington NHS Community Dental Fluoride varnish team will be revisiting your child's school next week to see children in year groups:

Nursery Year 2 for the fluoride varnish application on Monday, 24th November 2025 and Tuesday, 2nd March 2026

Your child will receive a 5min and 5min before to take home, you must be and return the form to the school office as soon as possible before the date.

What is Fluoride Varnish? It is a pale-yellow gel applied to children's teeth using a small soft brush. The varnish sets quickly, has a pleasant taste and a fruity smell. Specially trained dental nurses apply the varnish to children's teeth using a soft brush.

Why is Fluoride Varnish applied to teeth? Fluoride varnish provides extra protection against tooth decay when used in addition to toothbrushing with fluoride toothpaste. The fluoride varnish application at school will be in addition to the treatment at their regular dentist.

Any reasons why it might not be applied at school?

- If your child has sore areas in their mouth.
- If your child has asthma or severe allergies / carries an Epi-Pen

Please ask their regular dentist about having it at the dental surgery.

Please ensure you send your child by filling out and returning the blue consent forms to the school ahead of our visit. The form has an FAQ (frequently asked questions) section.

For queries, please contact the programme lead. Email: Lucy@nhs.uk Phone: 07463 271 831

Top tips for good oral health

- Brush your teeth twice a day with a fluoride toothpaste. Spit don't rinse!
- Reduce the frequency and quantity of sugary foods and drinks.
- Visit your dentist regularly. (Scan the QR code to find an NHS Dentist)

Fluoride Varnish Programme - Newington Green School -24th November 2025 Nursery -YEAR 2

MESSAGE FROM THE SCHOOL COUNCIL

A huge thank you to our wonderful PTA for organising a fantastic fundraising event to support families in Jamaica affected by Hurricane Melissa.

The event was full of energy, with delicious food, lively music, and a brilliant community spirit throughout the day. Thanks to everyone who came along, donated, and helped make the event such a success.

Your generosity will make a real difference to families rebuilding their lives after the hurricane.



NEWINGTON GREEN

IMPORTANT DATES

- **Odd Socks Day** Monday 10th of November
- **Year 1 trip to Freightliners Farm** Thursday 13th November
- **Book Fair** after school Thursday 13th November
- **Year 5 trip to The Science Museum** Friday 14th November
- **Bring a parent to school reading morning** Friday 14th November followed by The Book Fair

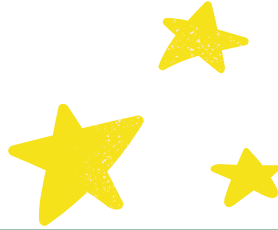
Educational Experiences in 2025-26

Year 1	Year 2	Year 3	Year 4
Freightliners's City Farm London Bus Tour Florence Nightingale Museum V&A Childhood Museum King Henry's Walk Garden	Tate Modern The Monument Horriton Museum London Zoo Hampstead Heath Museum of Docklands	British Museum Science Museum Panorama Westminster Walk London Aquarium Kew Gardens Mosque Visit	Science Museum Chocolate Museum Church Visit Rigged School River Lea Highgate Wood
Year 5	Year 6		
Olympic Park Science Museum British Museum Synagogue Visit London Zoo Southbank	HMS Belfast Jewish Museum Ben Kinzella Workshop Theatre trips National Portrait Gallery		

A voluntary donation of £24 via Arbor helps fund all the educational visits we offer over the year.
Your generous donations help make trips like these possible, and mean we can offer a range of fantastic learning opportunities!
For more details, or if you have any questions, please speak to us in the office!

STARS OF THE WEEK

- Year 1** - Oscar and Haytham
- Year 2** - Dion and Rayan
- Year 3** - Ramzi and Ibtihaj
- Year 4** - Hazel and Abby
- Year 5** - Roniel and Jan
- Year 6** - Kalisha



ATTENDANCE STATS

Whole school attendance this year: **94.5%**
 Statutory school attendance: **94.8%**
 This week's average: **94%**
 National average this year: **95.2%**



WE NEED ATTENDANCE CHAMPIONS

WE ARE LOOKING FOR ENTHUSIASTIC YEAR 4-6 PUPILS TO JOIN OUR ATTENDANCE CHAMPIONS TEAM. HELP PROMOTE GREAT ATTENDANCE, ENCOURAGE YOUR CLASSMATES, AND MAKE A REAL DIFFERENCE IN OUR SCHOOL!



We are looking for enthusiastic Year 4-6 pupils to join our Attendance Champions Team.

Help promote great attendance, encourage your classmates, and make a real difference in our school!

Apply **here** now to be a role model for excellent attendance!

BREAKFAST CLUB

Newington Green Primary School Breakfast Club Plan for week beginning 10.11.2025
 Staff who we know will be working at Breakfast Club: Lead: Lisa B Playworkers: Asmie & Syrus

Monday	Tuesday	Wednesday	Thursday	Friday
Reading corner Homework support, please bring in the work you would like support with!	Reading corner Homework support, please bring in the work you would like support with!	Reading corner Homework support, please bring in the work you would like support with!	Reading corner Homework support, please bring in the work you would like support with!	Reading corner Homework support, please bring in the work you would like support with!
Arts and Crafts Butterfly Collage Craft	Maths Activities Walk to School	Literacy activities Phase 2,3,5 tricky Words word search	EYFS Focus Parts of a Sunflower Labelling Activity	Free Choice artistry area, colouring, sticking, crafting, etc.
Legal Board games Giant jigsaw Puzzles Knitting & Cross stitch Arts & Craft	Legal Board games Giant jigsaw Puzzles Knitting & Cross stitch Arts & Craft	Legal Board games Giant jigsaw Puzzles Knitting & Cross stitch Arts & Craft	Legal Board games Giant jigsaw Puzzles Knitting & Cross stitch Arts & Craft	Legal Board games Giant jigsaw Puzzles Knitting & Cross stitch Arts & Craft

Adaptations
 Small groups of children will participate in activities with adult supervision to gain access and support where needed.

Meals
 Weetabix, Rice Krispies, and Cornflakes. Hot food will be one of the following: Pancakes with syrup, toast with scrambled eggs.

AFTERSCHOOL CLUB

Newington Green Primary School After School Club Plan for week beginning 20.10.2025

Monday	Tuesday	Wednesday	Thursday	Friday
Board and/or card Games	Board and/or card Games	Board and/or card Games	Board and/or card Games	Board and/or card Games
Communication and construction	Construction area - Giant Jenga	Giant Floor Puzzles	Construction Lego	Construction area - Dot markers
Literacy & Mathematics Wordsearches, Crosswords & Maths puzzles	Literacy & Mathematics Wordsearches, Crosswords & Maths puzzles	Literacy & Mathematics Wordsearches, Crosswords & Maths puzzles	Literacy & Mathematics Wordsearches, Crosswords & Maths puzzles	Literacy & Mathematics Wordsearches, Crosswords & Maths puzzles
Halloween Art with Macia Fine Motor Skills	Paint with Zahnah Art & Design	Pam Pam with Tuzet Fine Motor Skills	Colour by Numbers with Asmie Colour by Numbers	Halloween Card Making Self Expression
Free choice artistry area, including colouring, sticking, crafting, collage etc.	Free choice artistry area, including colouring, sticking, crafting, collage etc.	Free choice artistry area, including colouring, sticking, crafting, collage etc.	Free choice artistry area, including colouring, sticking, crafting, collage etc.	Free choice artistry area, including colouring, sticking, crafting, collage etc.

FREE SCHOOL MEAL VOUCHERS DURING SCHOOL HOLIDAYS

Do you qualify for free school meals (FSM) status. Anyone who hasn't applied or whose circumstances may have changed please apply on Islington's Citizen portal to see if you are eligible.
[Free school meals | Islington Council](#)

SUPPORT WITH CHILDCARE

If you are a working parent and require help with Childcare please use the links to see what help is available.

[Eligibility checker | Best Start in Life](#)

[Tax-Free Childcare - GOV.UK](#)

[Free Childcare for Working Parents: Overview - GOV.UK](#)