



# NEWINGTON GREEN

## NEWSLETTER

12/12/25

ADMIN@NEWINGTONGREEN.CO.UK

### HEADTEACHER'S MESSAGE

Dear Parents and Carers,

Our children continue to participate in a range of fantastic enrichment opportunities right up until the end of term. On Tuesday, Year 6 visited the National Portrait Gallery as part of their History learning. Year 3 visited the Hackney Empire on Wednesday to watch the pantomime, Cinderella. Thank you to all the parents/carers who supported on trips this week and throughout the term. We really appreciate your time and support. Today, our Eco Squad took part in an air quality workshop. They also had an opportunity to go and measure the air quality in different parts of the school.

Throughout the week, the corridors have been filled with festive tunes, as the children rehearse for their performances next week. A little reminder of day and times for performances for your dairies:

Wednesday 17<sup>th</sup> December @ 9.30am - Early Years Nativity performance

Wednesday 17<sup>th</sup> December @ 11.00am - Years 1 - 3 Christmas song performance

Wednesday 17<sup>th</sup> December @ 2.30pm - Year 4 - 6 Christmas song performance

We look forward to seeing you all there. We would really appreciate your help by getting the children to practice their song lyrics at home over the weekend.

A final reminder that the last day of term is Friday 19<sup>th</sup> December and we break up at 1.30pm. There is no ASC that day.

Wishing you all a lovely weekend.

### ATTENDANCE CHAMPIONS FIRST EVENT

We are excited to share that our Attendance Champions have organised their first event of the year. It is a Pokémon Trading Card Session. The children have worked very hard to choose an activity that is fun, inclusive, and welcoming for everyone. We are very proud that they have taken the importance of attendance and inclusivity to heart. They explained that if everyone feels inspired to come into school, our attendance will improve and no one will feel left out.

The event will take place on **Thursday 18 December at lunchtime** in the Performance Hall.

#### What pupils need to know:

- Children may bring Pokémon cards to school on Thursday only.
- All cards must be handed to their class teacher in the morning for safekeeping.
- During the session, children will be able to swap and trade cards with their friends.
- There will be a donation table for pupils who do not have cards, so everyone can join in.

Lets make this the highest attended day this year! We are looking forward to seeing the Attendance Champions lead more creative ideas throughout the year. Please keep an eye on the newsletter for future events.

#### Pokémon Trading Session

Thursday Lunchtime

🕒 12:30 – 1:00 PM

📍 Performance Hall

Bring your Pokémon cards and trade with your friends!

Don't have any cards? No problem! Visit our Donation Table and pick some up.

#### Our Rules:

Hand in your cards to your teacher when you arrive at school.  
Have FUN!

Got extra Pokémon cards you don't need?

Please give them to Sandra so others can enjoy them too!



# MAKING PACKED LUNCHES EASIER: LEFTOVERS TO THE RESCUE!

Hello dear parents and carers!

We all know the morning rush can be stressful, especially when trying to prepare a balanced packed lunch. One simple trick that can save time and reduce food waste is using leftovers. Children often enjoy familiar foods, and with a little creativity, yesterday's dinner can become today's delicious lunch.

To help keep lunches healthy and in line with school guidelines, aim for a simple balance: fruit + veg + main + protein/dairy + small treat + water.

**Fruit and Veg:** Add a pot of grapes, some strawberries, or a whole apple for a naturally sweet boost. Cucumber sticks or carrot batons are quick wins. Even leftover roasted vegetables taste great cold and add extra nutrients.

## Main (using leftovers!)

- Pasta salad pot: Mix leftover plain pasta with sweetcorn, chopped tomato, and leftover chicken. Add a drizzle of olive oil and a tiny pinch of salt.
- Chicken wrap: Use a tortilla and fill it with leftover chicken, a little cheese, mayo, and crisp lettuce. Simple, tasty, and very child-friendly.

**Treat:** A plain yoghurt with berries and a touch of honey works wonderfully. A cookie or a couple of digestives with a light spread of jam are also good occasional treats.

**Drink:** Water is always the best choice. Fruit juices can be high in sugar, especially if consumed daily, so please use these sparingly.

Reinventing leftovers is an easy way to make lunch prep quicker, reduce waste, and keep meals balanced and enjoyable for children.

Hope it goes amazing — happy lunch-making!

Tiago



## INCREDIBLE YEARS @NG

## KEEP CHILDREN SAFE ONLINE

**Incredible Years Parenting Group**  
For parents of primary school children aged 6-10 years

Thursdays 9.30am - 12.15pm (9.45am start)  
January 22nd - May 14th 2026  
(14 weeks with breaks for school holidays)  
Newington Green Primary School  
Matthias Rd, Mayville Estate, London N16 8NP

Zeny Melissouraki Clinical Psychologist, Islington CAMHS  
Tashi-Ann Page, Educational Support Practitioner, Bright Futures, Islington

For further information, please contact  
Bright Futures on 020 7527 4343 [tashi-ann.page@islington.gov.uk](mailto:tashi-ann.page@islington.gov.uk)  
Islington CAMHS on 020 3364 1824, [z.melissouraki@islington.gov.uk](mailto:z.melissouraki@islington.gov.uk)

It's Christmas Time - Parents guide to help keep children safe online

**It's always best to be prepared**

Many parents may be planning to give electronic gadgets to their children this festive period. Our guide is designed to help parents take a realistic approach to help keep their children safe when using the internet, social media and playing online games. Scan the QR code to find out more.

Online safety is when young people know who they can tell if they feel upset by something that has happened online.

Parents please contact your school to enquire attending their next e-safety workshop or have any concerns.

Working with Home Office PREVENT, The Police and Crime Commissioner and Children's Safeguarding Partnerships to help keep children safe online.  
Skips Educational. Email: [info@skipsed.com](mailto:info@skipsed.com) Tel: +44 121 227 1941

**Skips** [www.skipsafety.net.org](http://www.skipsafety.net.org)

## CHILDRENS BOOK PROJECT

Over the past two weeks, many of our pupils have chosen books from the Children's Book Project. It has been lovely to see their faces light up as they selected stories to take home and enjoy. The charity works to tackle book poverty by making sure every child has access to books they can treasure.

Reading is an important part of every child's development. It supports language skills, builds imagination, and helps children grow in confidence. We hope the books chosen this week and last week continue to inspire plenty of curiosity and enjoyment at home. Please see the photos below of our pupils exploring their new books.



## SPANISH NEWS

Children in Year 2 made films this week, pretending to be Spanish-speaking children receiving presents and the Three Kings delivering them, ready for 6<sup>th</sup> January. Nursery, Reception and Year 1 children can't wait to see the films next week to discover how Spanish speakers celebrate Christmas! Here are some stills from one of the films. All children enjoyed dressing up as the kings and swishing their cloaks before sneaking away.



## CHRISTMAS HOLIDAY SUPPORT

The holiday season can be challenging for some families and young people. If you or someone you know needs support, there are several free and confidential services available:

### Urgent Crisis Support

- [CAMHS South Hub Crisis Service](#): Urgent mental health support for ages 0–18 (Islington & Camden GPs).
- [NCL Crisis Team](#): Call 020 3758 2056
- [Islington SEMH](#): Call 020 7527 3355
- [South Hub CAMHS Crisis Team | Waiting Room](#)

### 24/7 Text and Listening Services

- [Shout](#) – Text SHOUT to 85258 or visit [Shout Crisis Text Line](#)
- [Samaritans](#) – Call 116 123 or email [jo@samaritans.org](mailto:jo@samaritans.org) (Samaritans)

### Support for Children and Young People

- [Childline](#) – Call 0800 1111 or chat online
- [Papyrus](#) – For suicidal thoughts: Call 0800 068 4141 or text 07860 039967 (Papyrus)
- [The Mix](#) – Free support for under 25s: Call 0808 808 4994 or visit [The Mix](#)

### Specialist Support

- [Beat](#) – Eating disorder support:
- [Youth line](#) (under 18s): 0808 801 0711
- [Student line](#): 0808 801 0811 (Beat)
- [Kooth](#) – Free, safe, anonymous online mental health community: [Kooth](#)

Click the image below for the Winter HAF Programme

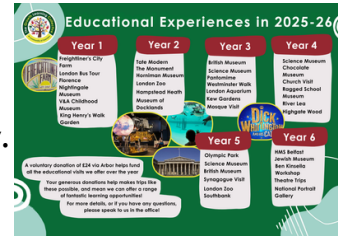


### Free holiday activities with lunch

Our free spring, summer and winter holiday programme gives young people the chance to enjoy a wide range of free activities with a healthy lunch.

# IMPORTANT DATES

- **Christmas lunch** Tuesday 16<sup>th</sup> December
- **EYFS Nativity** Wednesday 17<sup>th</sup> December @ 9.30am
- **Years 1 – 3 Christmas performances** Wednesday 17<sup>th</sup> December @ 11.00am
- **Years 4 – 6 Christmas performances** Wednesday 17<sup>th</sup> December @ 2.30 pm
- **Pokémon card swapping session** Thursday 18<sup>th</sup> of September
- **Last day of school EARLY FINISH** Friday 19<sup>th</sup> December @ **1.30PM**. No ASC on that day.
- **Children return to school** Tuesday 6<sup>th</sup> January 2026
- **Year 5 & 6 parent meeting** to share spring topics Tuesday 13<sup>th</sup> January @ 3.15pm
- **Year 1 & 2 parent meeting** to share spring topics Wednesday 14<sup>th</sup> January @ 3.15pm
- **Nursery & Reception parent meeting** to share spring topics Thursday 15<sup>th</sup> January @ 3.15pm
- **Year 3 & 4 parent meeting** to share spring topics Friday 16<sup>th</sup> January @ 3.15pm



# STARS OF THE WEEK

- Year 2** - Matteo and kyrie
- Year 3** - Whole Palm class and Jayce
- Year 4** - Aiden and Kieran
- Year 5** - Ronnie and Devonte
- Year 6** - Ibrahim and Ariana



# ATTENDANCE STATS

Whole school attendance this year: **95.6%**

Statutory school attendance: **94.8%**

This week's average: **92.8%**

National average this year: **94.7%**

Elm	95.00%
Mulberry	94.70%
Silver birch	94.00%
Holly	93.70%
Pine	93.50%
Maple	93.30%
Palm	93.30%
Rowan	93.00%
Ash	92.10%
Willow	92.00%
Cedar	90.00%
Oak	88.70%

# BREAKFAST CLUB

Newington Green Primary School Breakfast Club Plan for week beginning 15.12.25				
Staff who we know will be working at Breakfast Club: Amie, Syrus, Tracey & Marcia				
Monday	Tuesday	Wednesday	Thursday	Friday
Reading corner Homework support, please bring in the work you would like support with!	Reading corner Homework support, please bring in the work you would like support with!	Reading corner Homework support, please bring in the work you would like support with!	Reading corner Homework support, please bring in the work you would like support with!	Reading corner Homework support, please bring in the work you would like support with!
Literacy/Mathematics Wordsearches, crosswords and maths puzzles.	Literacy/Mathematics Wordsearches, crosswords and maths puzzles.	Literacy/Mathematics Wordsearches, crosswords and maths puzzles.	Literacy/Mathematics Wordsearches, crosswords and maths puzzles.	Literacy/Mathematics Wordsearches, crosswords and maths puzzles.
Literacy Activities Blue Bird Search	Christmas Crafts	Maths Activities Roll Game	Needlecraft	Card Making
Legol Board games Giant Jigsaw Puzzles Knitting & Cross stitch Arts & Craft	Legol Board games Giant Jigsaw Puzzles Knitting & Cross stitch Arts & Craft	Legol Board games Giant Jigsaw Puzzles Knitting & Cross stitch Arts & Craft	Legol Board games Giant Jigsaw Puzzles Knitting & Cross stitch Arts & Craft	Legol Board games Giant Jigsaw Puzzles Knitting & Cross stitch Arts & Craft

# AFTERSCHOOL CLUB

Newington Green Primary School After School Club Plan for week beginning 15.12.2025				
Monday	Tuesday	Wednesday	Thursday	Friday
Board and/or card Games	Board and/or card Games	Board and/or card Games	Board and/or card Games	Board and/or card Games
Communication and construction	Construction area - Giant Jenga	Giant Floor Puzzles	Construction Lego	Construction area - Doll houses
Literacy & Mathematics Wordsearches, Crosswords & Maths puzzles	Literacy & Mathematics Wordsearches, Crosswords & Maths puzzles	Literacy & Mathematics Wordsearches, Crosswords & Maths puzzles	Literacy & Mathematics Wordsearches, Crosswords & Maths puzzles	Literacy & Mathematics Wordsearches, Crosswords & Maths puzzles
Colling with Marie Flour Molar skills	Christmas Decorations with Sarah Art & Design	Rainbow Sall Jars with Sarah Fine Motor Skills	Card Making with Amie	Art & Design with Sarah
Free choice artsy area, including colouring, sticking, crafting, collage etc.	Free choice artsy area, including colouring, sticking, crafting, collage etc.	Free choice artsy area, including colouring, sticking, crafting, collage etc.	Free choice artsy area, including colouring, sticking, crafting, collage etc.	Free choice artsy area, including colouring, sticking, crafting, collage etc.

### FREE SCHOOL MEAL VOUCHERS DURING SCHOOL HOLIDAYS

Do you qualify for free school meals (FSM) status. Anyone who hasn't applied or whose circumstances may have changed please apply on Islington's Citizen portal to see if you are eligible.  
[Free school meals | Islington Council](#)

### SUPPORT WITH CHILDCARE

If you are a working parent and require help with Childcare please use the links to see what help is available.

[Eligibility checker: I Best Start in Life](#)

[Tax-Free Childcare - GOV.UK](#)

[Free Childcare for Working Parents: Overview - GOV.UK](#)

Well done Elm! Popcorn Party coming your way.