

NEWINGTON GREEN

NEWSLETTER

27/02/26

ADMIN@NEWINGTONGREEN.CO.UK

HEADTEACHER'S MESSAGE

Dear Parents and Carers,

Welcome back, everyone! I hope you all had a restful and enjoyable half-term break. It has been wonderful to see the children return with such enthusiasm and energy for this new—though short—half-term ahead. There is a lot to look forward to, and I'm excited for all the learning, creativity and community spirit the next few weeks will bring.

Next week, we will be celebrating **World Book Day**, which takes place on **Thursday 5 March 2026**. This is always a highlight of our school year, and a wonderful moment to celebrate the joy and importance of reading. As it is the National Year of Reading, we would love as many pupils and staff as possible to join in the celebrations. A separate letter has been sent out to all families, with details of what we will be doing on the day. This includes some ideas for fun and cheap costumes. We are thrilled that every child will receive a free book token, allowing them to choose from the fantastic selection of £1 books available this year.

In our Wednesday library slot, the children had the wonderful opportunity to choose two lovely book gifts, courtesy of the Children's Book Project. Encouraging a love of reading opens doors to imagination, knowledge, and lifelong learning, and we can't wait to see the excitement across school as children dive into new stories.

Positive communication is at the heart of our school community. Our staff are here to help, and are always happy to listen to parents/carers. We ask all parents, and carers to be polite and considerate when interacting with staff, either in person or in writing, so that we can work together effectively for the benefit of every child. Thank you for helping us maintain a school culture built on kindness, cooperation, and mutual respect.

Finally, I want to say a massive thank you and well done to all our families for your continued focus on improving attendance. Whole school attendance has reached 95% this week!!

Wishing everyone a lovely weekend and a wonderful term ahead.

CHILDRENS MENTAL HEALTH WEEK - THIS IS MY PLACE

During Children's Mental Health Week, we explored this year's theme, This Is My Place. Throughout the week, children took part in a range of thoughtful and creative activities designed to help them reflect on where and how they feel they belong. One of our highlights was a whole school collaborative artwork inspired by the theme. Many children contributed, sharing their ideas about belonging, community and what makes Newington Green special to them.

The finished piece is now proudly displayed in the school office and stands as a celebration of our shared identity.

The week sparked important conversations about what it means to belong at NG. Children spoke about friendships, trusted adults, safe spaces and feeling heard. A strong sense of belonging is closely linked to wellbeing, confidence and positive attendance, and it also reflects the principles of the **UN Convention on the Rights of the Child**, particularly children's right to be heard and to feel safe and included.



We would now like to build on this work by gathering the views of pupils, staff and families on how we can continue to strengthen belonging across our school community. Further information will follow soon explaining how you can support the school with this.

YEAR 5 INTO UNIVERSITY

This week, Year 5 took part in a visit to IntoUniversity, a local centre that supports young people to achieve their aspirations, including further and higher education, employment and training.

Pupils learned about the different pathways available to them in the future and took part in engaging activities designed to build confidence and ambition. The session reinforced the message that every young person has talent and potential, and that with the right support, they can achieve excellent post-school destinations.

We are proud of how thoughtfully and enthusiastically Year 5 represented the school.



NG SPORTS TEAMS

Our Year 5 and 6 boys proudly represented Newington Green at the Arsenal football tournament, demonstrating teamwork, determination and excellent sportsmanship throughout the competition.

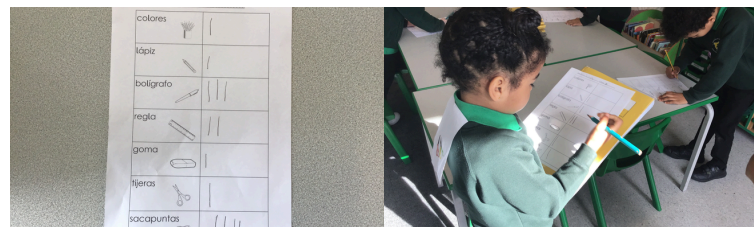
We were also delighted to see our Newington Green netball team compete in the Islington Netball Tournament. The team showed fantastic resilience and cooperation, representing the school with confidence and pride.

Well done to all of our pupils for their commitment and positive attitude both on and off the pitch and court.



YR 1 SPANISH

Children in Year 1 started their new topic this week - 'In the Classroom'. They began to learn the names for objects they use and did a survey of equipment, using their Spanish numbers to do a stocktake.



ONLINE SAFETY ASSEMBLY AND WORKSHOP

Year 4, 5 and 6 have an online safety assembly and workshop. On Monday the 2nd of March we will be joined by 3Discovery who always deliver fun and engaging activities. We will learn about AI, how to detect fake information and how to keep safe online.

2 nd March	9-9.25am	9.30-10.45am	Break	11-12.30pm	Lunch	1.30 – 3pm
Alan	Whole School	Year 4 x2		Year 5 x2		Year 6 x2
Workshop	Assembly – Safer Internet	Animated Adverts		Movie Making		Movie Making with Green Screens

ATTENDANCE SUCCESS AT NEWINGTON GREEN

We are delighted to share that our whole school attendance has reached 95%. This is a fantastic achievement and reflects the collective commitment of our pupils, families and staff.

We are now very close to our 96% target, and with continued partnership we know we can achieve it. Every day in school strengthens learning, friendships and confidence. When children attend regularly, they feel more secure, more connected and more able to thrive.

The work highlighted in this newsletter around belonging, safety and feeling heard is central to our approach. When children feel that this is their place, attendance naturally improves. We are proud of the culture we are building together.

Due to popular demand, Pokémon trading sessions will now take place every Monday lunchtime as part of celebrating positive engagement in school life.

If every pupil reaches 97% attendance this term, we will move even closer to our overall goal. Small improvements across the school community make a significant difference.

Thank you for your continued support. Together, we will achieve great things.

95%

ATTENDANCE CHAMPIONS PRESENT

POKÉMON CARD TRADING SESSIONS

MONDAYS PE HALL
1PM


BE IN TO TRADE



PAIRED READING WORKSHOP

Paired Reading Workshop

Friday 6th March
9:30am-10:30am



with **Dr Lottie Devey Smith**
(Educational Psychologist)

What is Paired Reading?

Paired Reading is a collaborative reading technique where parents and children read together to improve literacy skills and foster a love for reading.

What to Expect

It will be an interactive session with practical tips. I will share some information about how children learn to read and how we can use paired reading to support

Why Attend?

- Enhance Reading Skills: Learn a way of supporting your child's reading development.
- Build Confidence: Help your child become a more confident reader.
- Strengthen Bond: Enjoy quality time and strengthen your relationship

THIS WEEK'S BOOK RECOMMENDATION

Books Worth Sharing

This week Hannah, Beech Tree's class teacher, is giving us her book recommendation.

Title: *The Cat Book* by Silvia Borando


★★★★★

Recommended for children aged: 3 - 5years old or 5 - 7years

Hannah thinks everyone should read this book because.... It is interactive and the pages of the book come to life as children follow instructions about how to look after their pet cat. All the children I have shared this book with have found it very funny and love to follow the actions.

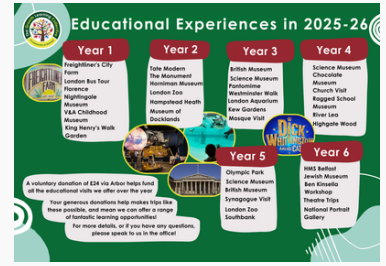
You will enjoy this book if you are ... a reader who enjoys humour and funny stories, fantasy stories set in imaginative worlds and readers who enjoy bright and colourful illustrations.

This book is best... for shared reading.



IMPORTANT DATES

- **Online Safety Workshops** Monday 2nd March
- **Yr 3 Suleymaniye Mosque Trip** Monday 2nd March
- **REC Beech - Forest School** Tuesday 3rd March
- **World Book Day 2026 (dress-up)** Thursday 5th March
- **Parent Reading Morning** Friday 6th March
- **Parent Reading Workshop with Lottie (EP)** Friday 6th March: 9.30am - 10.00am
- **Y5 Mulberry British Museum Trip** Friday 6th March
- **Year 2 London Zoo Trip** Friday 6th March



STARS OF THE WEEK

- Year 1** - Ire and Zumra
- Year 2** - Omer and Ayla K
- Year 3** - Poppy and Aaron
- Year 4** - Shamsa and Harper
- Year 5** - Najah
- Year 6** - Angelo and Makhdi



ATTENDANCE STATS

Whole school attendance this year: 95.7%

Statutory school attendance: 95%

This week's average: 96.3%

National average this year: 94.6%



GOOD ATTENDANCE

MEANS BEING IN SCHOOL AT LEAST 94% OF THE TIME... OR HAVING NO MORE THAN 8 DAYS OFF!

0

DAYS ABSENCE
100% ATTENDANCE

MORE TIME IN SCHOOL MEANS MORE TIME TO LEARN, DEVELOP & GROW!

8

DAYS ABSENCE
96% ATTENDANCE

DON'T BOOK APPOINTMENTS DURING SCHOOL TIME!

19

DAYS ABSENCE
90% ATTENDANCE

LESS TIME IN SCHOOL MEANS LESS TIME TO BECOME THE VERY BEST YOU!

29

DAYS ABSENCE
85% ATTENDANCE

38

DAYS ABSENCE
80% ATTENDANCE

POOR ATTENDANCE MEANS DRAMATICALLY REDUCED LIFE CHANCES!

47

DAYS ABSENCE
75% ATTENDANCE

EDUCATION + ATTENDANCE + EFFORT = ENDLESS POSSIBILITIES!

Newington Green Primary School

Matthias Road, London N16 8NP
 Tel: 020 7254 3092 Fax: 020 7275 9041
 Email: admin@newingtongreen.co.uk / Website: www.newingtongreen.co.uk
 Executive Headteacher: Paul Thomas
 Head of School: Mairead McDonnell



Important Notice for Parents and Carers

RE: TERM TIME LEAVE, UNAUTHORISED ABSENCE AND MEDICAL ABSENCE

Dear Parent/Carer,

Along with all Islington schools, Newington Green Primary has a legal duty to ensure that pupils' attendance is as good as possible, and to investigate all absence so that the reasons are fully understood. Regular attendance is essential in ensuring that every child receives the education and care they are entitled to.

We are pleased to see that attendance at Newington Green Primary has been improving, and we are grateful to the many parents and carers who consistently support the school by ensuring their children are present and punctual every day.

However, one of the most frequent causes of absence continues to be unauthorised holidays and leave during term time, including travel abroad. These absences most commonly occur at the beginning or end of each term, and they significantly disrupt children's learning.

Please be reminded that it is against the law for parents or carers to take children out of school for holidays or other unauthorised leave during term time. Leave can only be granted in exceptional circumstances, in line with Islington guidance. Please note that exceptional circumstances do not typically include travelling abroad to visit sick relatives. Any requests for leave must be made in advance and will be considered on an individual basis.

We strongly advise parents not to book holidays, travel, or flights during term time under any circumstances. The school will closely review all absence requests, and where applicable, consider any evidence submitted regarding exceptional circumstances. Parents who choose to take unauthorised leave, including overseas travel, may be issued with a warning and a penalty notice by the Local Authority of £80 (rising to £160 if unpaid on time) per parent per student.

In addition, please be aware of our strengthened procedures regarding illness. The school will not authorise illness-related absences lasting more than three days unless medical evidence is provided by a healthcare professional. Acceptable forms of evidence include:

- A medical certificate or sick note (if issued), or
- A printout from the clinic or GP reception confirming the date of your child's appointment or visit.

If you are unable to secure a medical appointment or leave your property, please inform the school. In these cases, we can arrange a home visit from our safeguarding team to support you and verify your child's wellbeing.

Our aim is to avoid any parent or carer being placed in a position where penalty notices or attendance actions become necessary. This letter is to ensure that all families are fully aware of the rules and expectations around attendance, term-time leave, and illness evidence requirements.

If you have any questions, or if you would like to discuss any part of this letter with a member of staff, please contact the school office or email the school and a member of staff will contact you back at a mutually agreeable time.

Yours sincerely,

Newington Green Primary School