

# NEWINGTON GREEN

## NEWSLETTER

27/03/26

ADMIN@NEWINGTONGREEN.CO.UK

### HEADTEACHER'S MESSAGE

Dear Parents and Carers,

As we come to the end of the spring term, I want to share how proud we are of the children's hard work, particularly in the last few weeks whilst they have been doing their assessments. Staff have been impressed not only by the progress the children have made since the start of the year, but also by the resilience, focus and positive attitude they brought to each assessment. It has been wonderful to see their confidence grow and their efforts reflected in the results. Remember to book your slot for Parents' evening on Arbor for 20<sup>th</sup> and 21<sup>st</sup> April.

This week, we celebrated Eid and Easter with special lunches cooked by Tiago and the kitchen team. The children really enjoyed both, in particular the delicious puddings!

At the end of term, I want to give a big thank you to our dedicated staff, whose ongoing commitment makes everything we do possible. We are so lucky to have such a great team who go over and above for our children every day. Today, Carmel, AHT for Years 1 - 3 and English Lead, goes on maternity leave. We wish her all the best for a relaxing Easter before the arrival of baby number 2.

Happy Easter to all our families who are celebrating this holiday. Wishing you all a happy and restful Easter break.

**School reopens on Monday 13<sup>th</sup> April for the start of the summer term. Please ensure children arrive on time and ready for the learning ahead.**



### EASTER BONNET COMPETITION

Our Easter Bonnet event was a wonderful celebration filled with creativity, colour and joy. There were so many incredible hats on display, each one showcasing the imagination and effort of our children and their families. From bright spring themes to beautifully detailed designs, every bonnet was unique and truly special.

We would like to say a big thank you to all the parents and children who put in such a huge effort to create these fantastic hats. Your support and enthusiasm made the event so memorable.

A special thank you also goes to the PTA for their generous donation of Easter eggs as prizes, which added an extra layer of excitement to the day. Please take a look at the photos to see some of the amazing creations!



## EASTER LUNCH CELEBRATION

Children had vanilla ice cream and chocolate chip cookies to celebrate Easter before the half-term break.

They enjoyed the treat and were super happy about it. The staff joined them for a sweet and fun lunch!



## COUNCILLOR ADVICE SESSION @ NG

Councillor Jenny Kay, one of our Vice-Chairs of the school's governing body, will be holding a councillor advice surgery at the school on Tuesday 21<sup>st</sup> April at 9.15am.

This is a great opportunity to seek advice or raise any concerns you may have.

Jenny represents Mildmay Ward in Islington. If you live in another part of Islington or in Hackney, she will still be happy to help, although she may direct you to your local councillors where appropriate.

If you are unable to attend at this time but would like to arrange an alternative appointment, you can contact her by: email at [Jenny.Kay@islington.gov.uk](mailto:Jenny.Kay@islington.gov.uk) or by phone on 020 7527 3114.



## ISLINGTON HOLIDAY ACTIVITIES



### Holiday Activities with Food (HAF) is back this Easter

Close to home around Highbury from Monday 30 March–Friday 10 April, look out for fun and friendly sports and crafts at the Highbury Roundhouse! Enjoy our varied cooking, games and sports sessions at Elizabeth House and much more! All with a healthy lunch.

There are dozens of free activities available for eligible children and young people in Islington, with each one including a healthy lunch – from theatre and museum trips to kayaking, roller skating, cooking, coding and much more.

For young people who are not eligible, there are lots of activities that are either free for everyone or require a small payment. [Find out if you're eligible.](#)

Booking is now open

## FREE SCHOOL MEAL VOUCHERS

To all parents/carers who receive Free School Meal vouchers, please note that Islington Council have requested we issue one £45 voucher per child for both the Easter and May half terms. You will receive these vouchers on Friday 27<sup>th</sup> March 2026.

## SCHOOL UNIFORM REMINDER

We have noticed an increase in the amount of lost uniform recently. As the weather fluctuates and children take jumpers and coats on and off, it's almost impossible for us to keep track of 100 identical green jumpers. Therefore we would encourage parents to put their children's names in the jumpers so they can be found and returned more easily. This would also ensure that all children are in the correct school uniform.



## BUILDING CONFIDENCE AND MANAGING ANXIETY IN YOUR CHILD

Workshops for parents at Newington Green Primary School

The Building Confidence and Managing Anxiety in Your Child Workshop for parents/carers is a workshop being delivered by the Islington School Wellbeing Service (SWS). The SWS works with schools across the borough to address the challenges children and young people commonly experience that can impact on their emotional wellbeing.

They will be delivering this workshop in-person.

**If you would like to attend, please X, or if you have any specific questions about the workshop content, please contact Helen Bennett.**



**Building Confidence and Managing Anxiety in Your Child with Autism**

**WHEN?** Monday 27<sup>th</sup> April 09:00-10:30

**WHO?** Open to parents/carers whose child is struggling with anxiety and is autistic, or is waiting for an autism assessment

The main areas of focus will be on understanding:

- o What anxiety is, and how children with autism experience anxiety
- o What the main factors are that can lead to the development of anxiety, as well as the factors that can maintain it
- o What strategies parents can use to manage anxiety and build confidence in children with autism



NEW Drama & Public Speaking Club Launching at Newington Green Primary! Children who can communicate clearly, share their ideas, and speak with confidence don't just thrive in school, they carry those skills for life. Public speaking is no longer a "nice to have"... it's a superpower!

That's why we are beyond excited to launch our NEW Drama & Public Speaking Club for ages 6–12 at Newington Green, starting after the Easter break. A high-energy, confidence-building experience designed to help children find their voice.

Whether your child loves the spotlight or is quietly building their confidence, this club gives them the tools to stand tall, speak clearly and believe in themselves.

Priority discounted booking is now open for just £17 per month!

Book your child's place here: <https://pbbl.uk/4shdCrH>  
Email [lauren@thedramacentre.co.uk](mailto:lauren@thedramacentre.co.uk) with any questions



## ATTENDANCE CELEBRATIONS

Due to the sheer number of children with 100% attendance, we were unable to distribute certificates today as planned. There were **165** certificates to write, which is absolutely incredible. Thank you and well done to everyone!

We are really proud of the improvement this term in our persistent absentee figure. Persistent absenteeism refers to children whose attendance falls below 90%, meaning they have missed the equivalent of a month of school or more. Our current rate is 10.9%, compared to the national average of 18.52%, meaning we are almost half below the national figure.

Today, we celebrated this fantastic achievement by giving out special postcards and gold stars to recognise over 30 children who have moved out of the persistent absentee category. Some children have improved their attendance by more than 15%, which is a truly significant achievement.

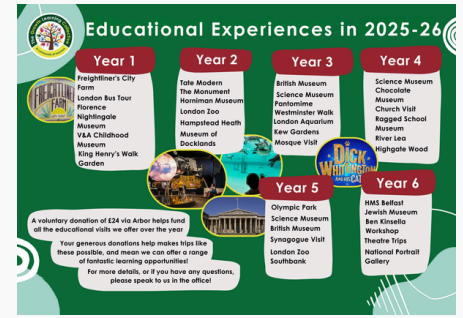
This progress would not have been possible without the commitment of our families, their willingness to accept support, and the open, honest conversations we continue to have together. Thank you for your ongoing support.

Please take a look at the postcard that was given out to celebrate this success.



# IMPORTANT DATES

- **Easter holidays** Monday 30<sup>th</sup> March - Friday 10<sup>th</sup> April
- **Children return to school** Monday 13<sup>th</sup> of April
- **Parents' Evening** Monday 20<sup>th</sup> April & Tuesday 21<sup>st</sup> April
- **Advice Surgery** with Local Councillor, Jenny Kay Tuesday 21<sup>st</sup> of April
- **SWS parent workshop** Monday 27<sup>th</sup> of April @ 9-10.30am
- **KS2 SATs Week** Monday 11<sup>th</sup> - Friday 15<sup>th</sup> May



## STARS OF THE WEEK

- Year 1** - Haythem and Berra
- Year 2** - Aoife and Azaan
- Year 3** - Amira
- Year 4** - Mirel and Nelson
- Year 5** - Hosna and Jan
- Year 6** - Atalay



## ATTENDANCE STATS






Whole school attendance this year: **95.3%**

Statutory school attendance: **95%**

This week's average: **91.8%**

National average this year: **94.6%**

## BREAKFAST CLUB

Newington Green Primary School Breakfast Club Plan for week beginning 13.04.2025				
Staff who we know will be working at Breakfast Club: Lead: Uko B Playworkers: Asmie & Synis				
Monday	Tuesday	Wednesday	Thursday	Friday
Reading corner	Reading corner	Reading corner	Reading corner	Reading corner
Homework support, please bring in the work you would like support with!	Homework support, please bring in the work you would like support with!	Homework support, please bring in the work you would like support with!	Homework support, please bring in the work you would like support with!	Homework support, please bring in the work you would like support with!
Arts and Craft 	Maths Activities Tangram Animals Activity 	Literacy activities 'gn' and 'kn' word search 	EYF5 Focus Frog Life Cycle Activity 	Free Choice artistry area colouring, sticking, crafting, etc. Mindfulness Fingerspelling Colouring 
Legal Board games Giant jigsaw Puzzles Knitting & Cross stitch Arts & Crafts	Legal Board games Giant jigsaw Puzzles Knitting & Cross stitch Arts & Crafts	Legal Board games Giant jigsaw Puzzles Knitting & Cross stitch Arts & Crafts	Legal Board games Giant jigsaw Puzzles Knitting & Cross stitch Arts & Crafts	Legal Board games Giant jigsaw Puzzles Knitting & Cross stitch Arts & Crafts
Adaptations Small groups of children will participate in activities with adult supervision to gain access and support where needed				
Menu Weetabix, Rice Krispies, and Cornflakes. Hot food will be one of the following: Pancakes with syrup, bagel with scrambled eggs, Buns, on toast and toastie, crumpets, waffles, and French toast.				

## AFTERSCHOOL CLUB

### FREE SCHOOL MEAL VOUCHERS DURING SCHOOL HOLIDAYS

Do you qualify for free school meals (FSM) status. Anyone who hasn't applied or whose circumstances may have changed please apply on Islington's Citizen portal to see if you are eligible.

[Free school meals | Islington Council](#)

### SUPPORT WITH CHILDCARE

If you are a working parent and require help with childcare, please use the links to see what help is available.

[Eligibility checker | Best Start in Life](#)

[Tax-Free Childcare - GOV.UK](#)

[Free Childcare for Working Parents: Overview - GOV.UK](#)

Mulberry	97.90%
Holly	96.30%
Elm	95.90%
Maple	94.90%
Cedar	94.30%
Palm	93.30%
Sycamore	92.70%
Rowan	92.70%
Oak	92.40%
Willow	92.30%
Silver birch	91.70%
Ash	91.70%
Beech	91.50%
Pine	87.40%
Apple	80.30%
Cherry	71.10%

**Congrats to Mulberry for highest attendance!**  
**Popcorn party first Friday back after Easter.**